



GREATER GILA COUNTY TRANSIT FEASIBILITY AND IMPLEMENTATION STUDY



Technical Working Group Meeting #3
January 18, 2018

Agenda

- Introductions
- Study Background and Purpose
- Draft Feasibility Report Summary
- Review Recommendations
- Recommendations to Carry Forward to Implementation Plan
- Next Steps and Action Items

Study Purpose

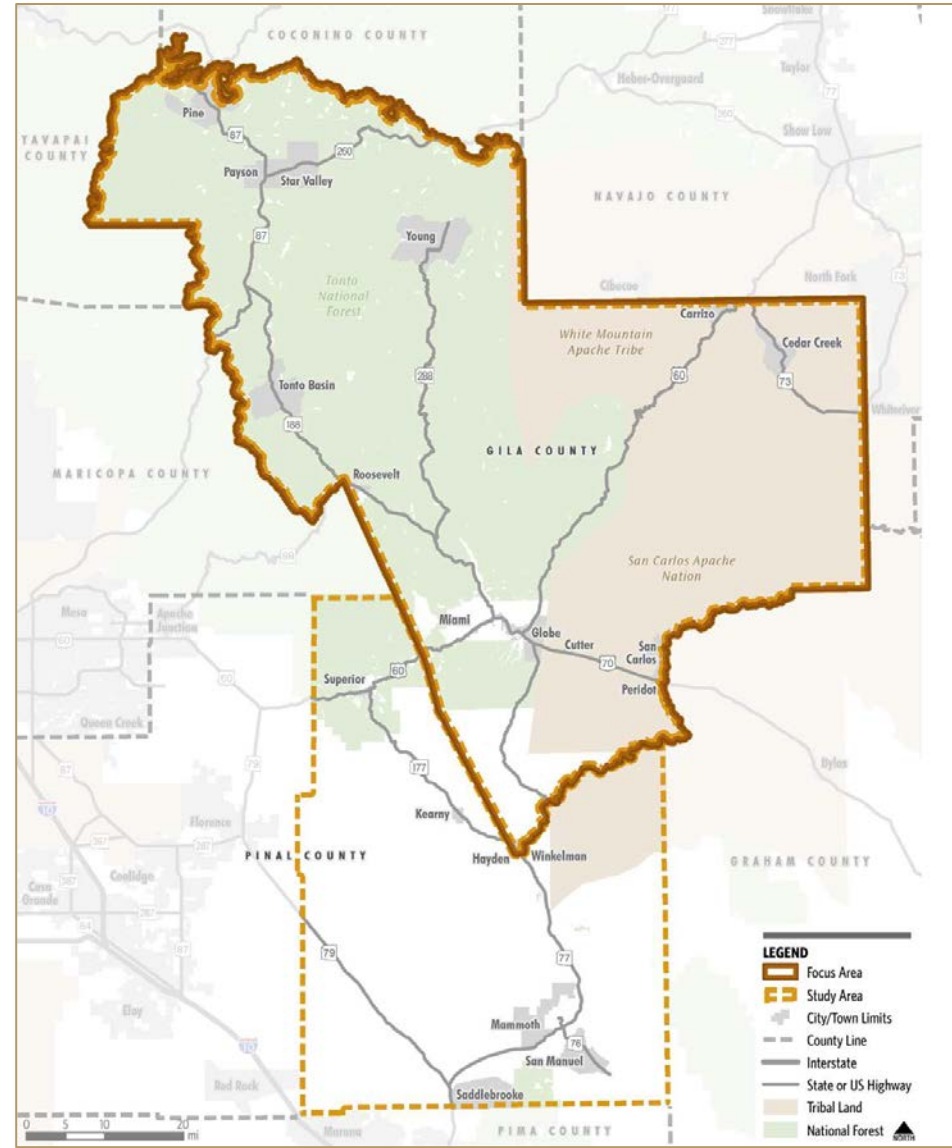
- Assess the current transit environment in the region
- Identify the needs, travel alternatives, and unmet transit demand
- Identify duplication or service overlaps; develop strategies to improve coordination among existing services
- Conduct a Feasibility Study:
 - Verify the need for transit service and assess community support
- Develop an Implementation Plan, if needed
- Identify and improve efficiencies by using existing transit resources

Focus Area

- Gila County

Study Area

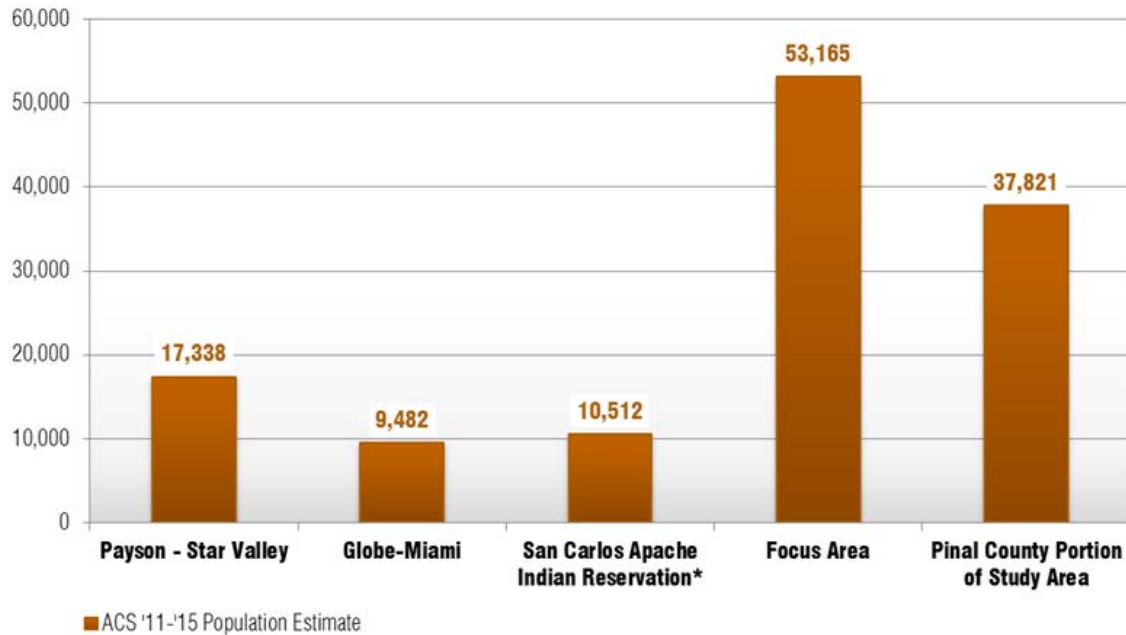
- Gila County
- Eastern Portion of Pinal County



Relevant Studies

- 2015 CAG Regional Transportation Plan (RTP)
- **CAG and SCMPO Human Services Transportation Coordination Plan 2017 – 2019**
- 2006 Gila County Small Area Transportation Study
- 2009 Gila County Rail Passenger Study
- 2013 Cobre Valley Comprehensive Transportation Study
- **2004 Payson Area Transit Feasibility Study**
- 2011 Payson Transportation Study
- **2011 San Carlos Apache Tribe Transit Feasibility Study**
- **2011 Pinal County Transit Feasibility Study**
- 2010 Statewide Rail Framework Study
- 2011 Arizona State Rail Plan
- 2008 Arizona Rural Transit Needs Study

Demographics - Population

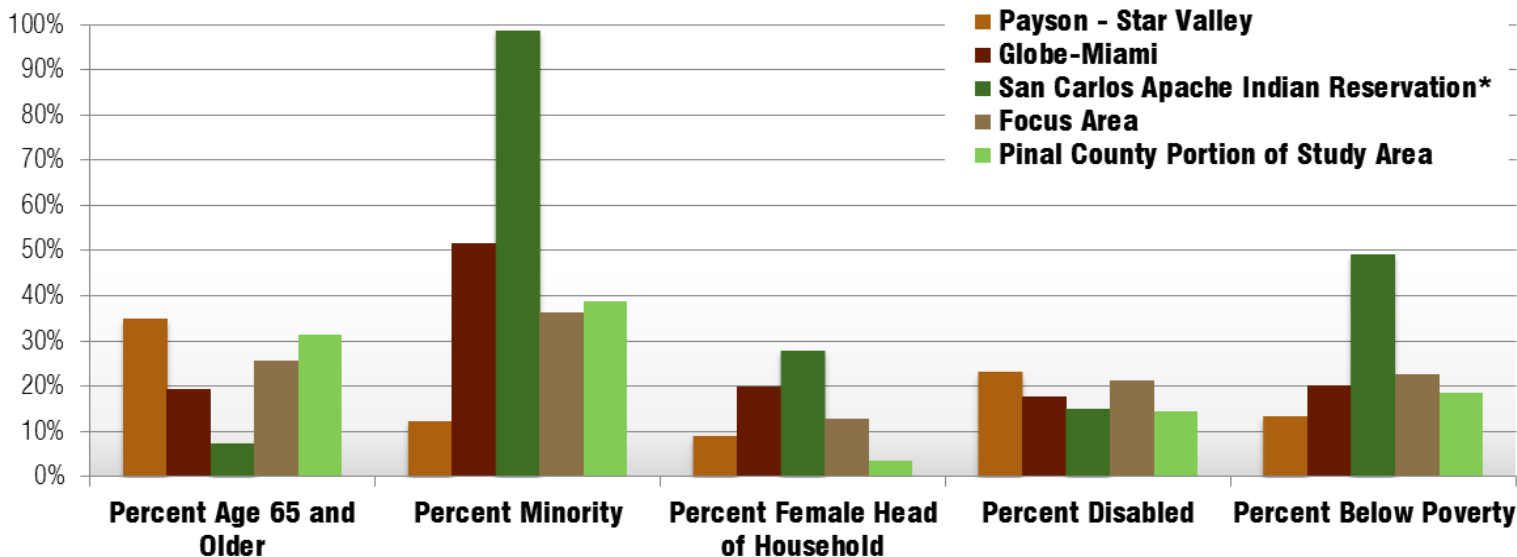


	Payson - Star Valley	Globe-Miami	San Carlos Apache Indian Reservation *	Focus Area	Pinal County Portion of Study Area
Total Population	17,338	9,482	10,512	53,165	37,821
Total Housing Units	10,563	4,344	2,811	32,952	17,048
Occupied Housing Units	7,707	3,633	2,330	20,909	13,515

Source: American Community Survey 5-Year Data (2011-2015)

*San Carlos Apache Indian Reservation population includes the entirety of the San Carlos Apache Indian Reservation

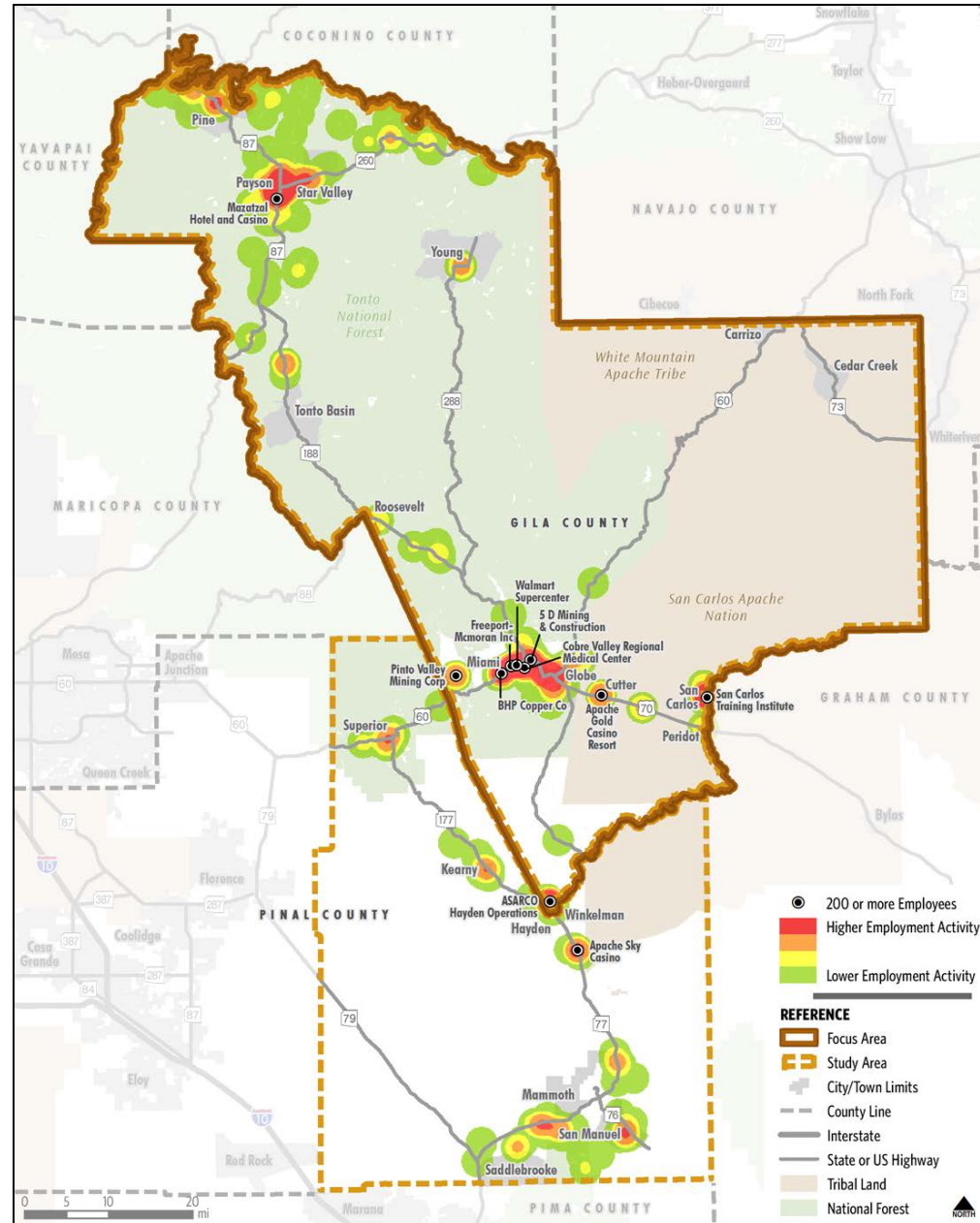
Demographics – Disadvantaged Population Groups



	Payson-Star Valley	Globe-Miami	San Carlos Apache Indian Reservation*	Focus Area	Pinal County Portion of Study Area
Total Population	17,338	9,482	10,512	53,165	37,821
Percent Age 65 and Older	34.9%	19.4%	7.4%	25.6%	31.3%
Percent Minority	12.2%	51.6%	98.7%	36.3%	38.7%
Percent Female Head of Household with Children Under 18 and No Husband Present	8.9%	19.9%	27.9%	12.8%	3.3%
Percent Mobility Limited	23.1%	17.8%	15.0%	21.2%	14.4%
Percent Below Poverty	13.3%	20.1%	49.2%	22.7%	18.4%

Major Trip Generators

- Approximately 24,790 employees within the Study Area



Current Commute and Travel Behavior

Means of Transportation to Work

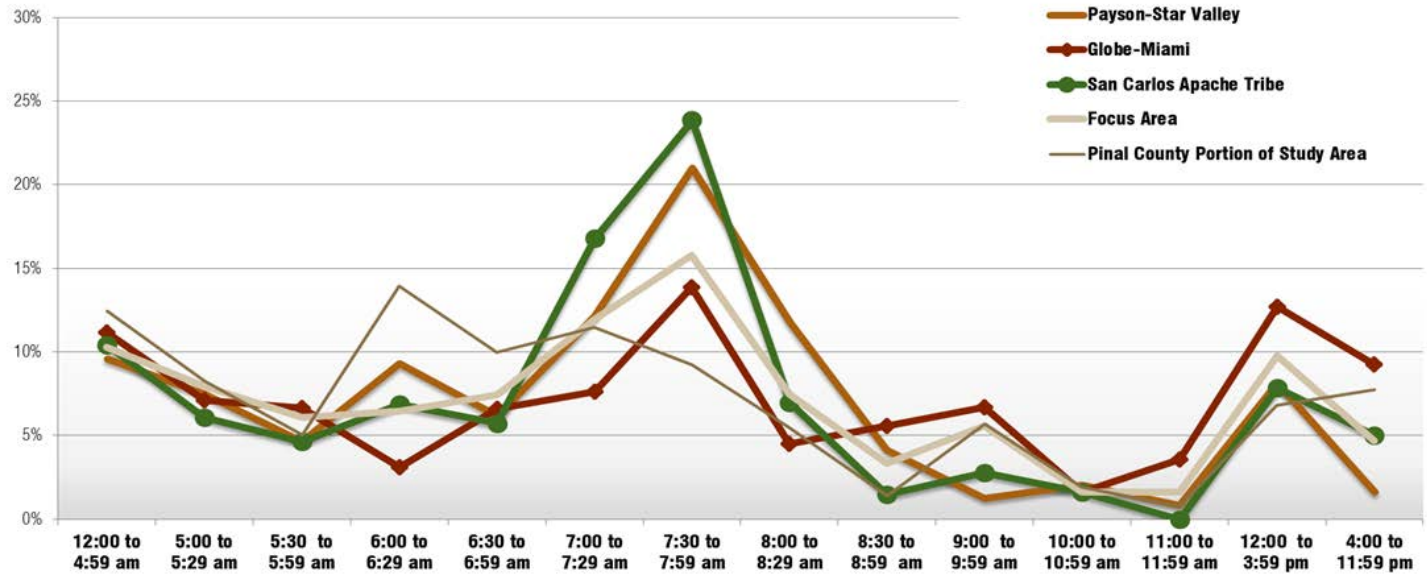
	Payson-Star Valley	Globe-Miami	San Carlos Apache Indian Reservation*	Focus Area	Pinal County Portion of Study Area
Drove Alone	83%	76%	66%	78%	78%
Carpooled	9%	14%	15%	11%	11%
Public Transportation	0%	0%	2%	0%	1%
Biked or Walked	0%	5%	8%	3%	2%
Worked at Home	7%	2%	4%	5%	1%
Other	1%	3%	6%	2%	7%

Travel Time to Work

	Payson-Star Valley	Globe-Miami	San Carlos Apache Indian Reservation*	Focus Area	Pinal County Portion of Study Area
Less than 10 Minutes	40%	24%	30%	28%	19%
10 to 19 Minutes	32%	48%	32%	39%	19%
20 to 29 Minutes	3%	15%	15%	12%	14%
30 to 59 Minutes	6%	9%	19%	11%	34%
60 to 89 Minutes	6%	3%	2%	4%	12%
90 or More Minutes	13%	0%	3%	5%	4%

Current Commute and Travel Behavior

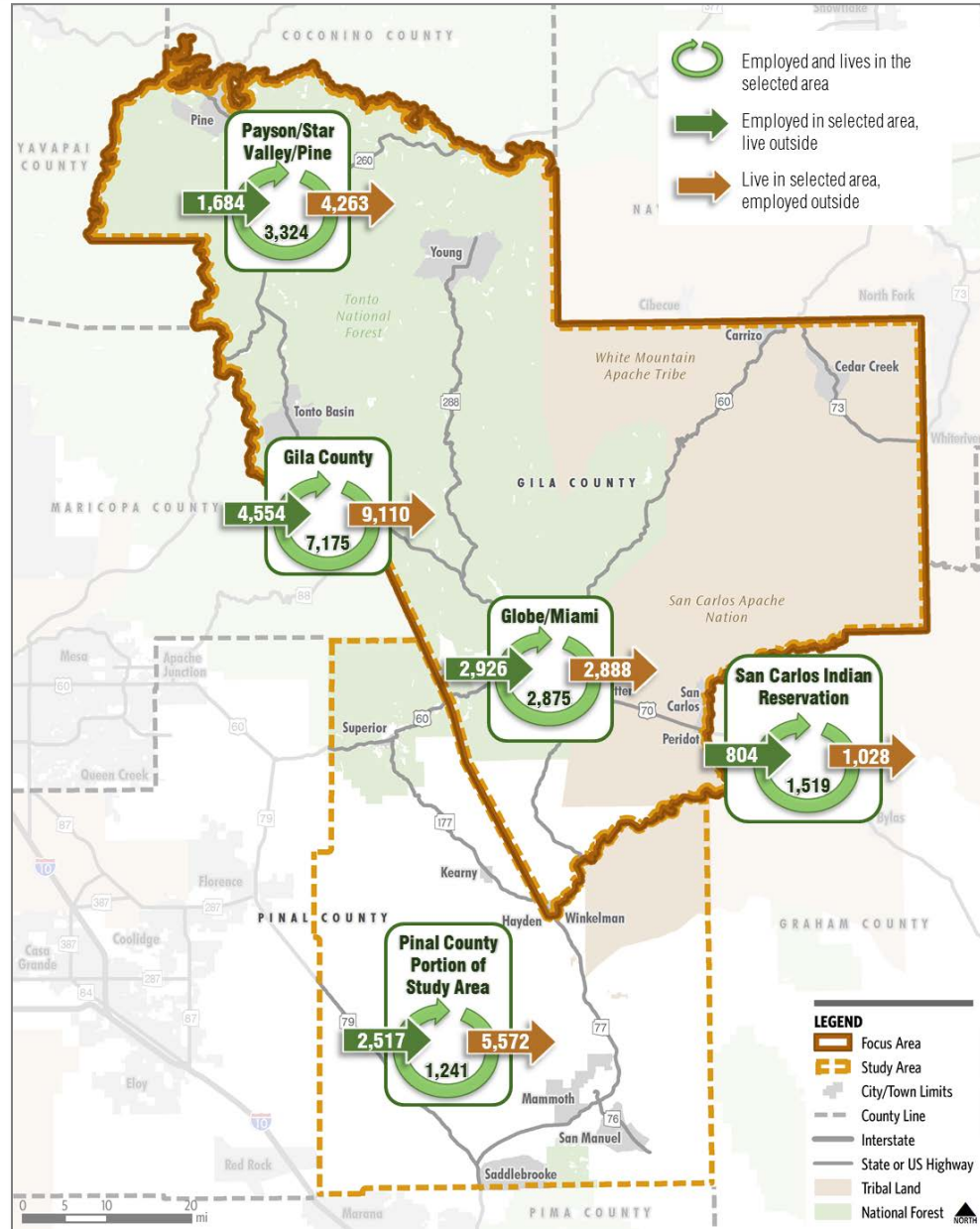
Time Leaving Home for Work



Access to Vehicles

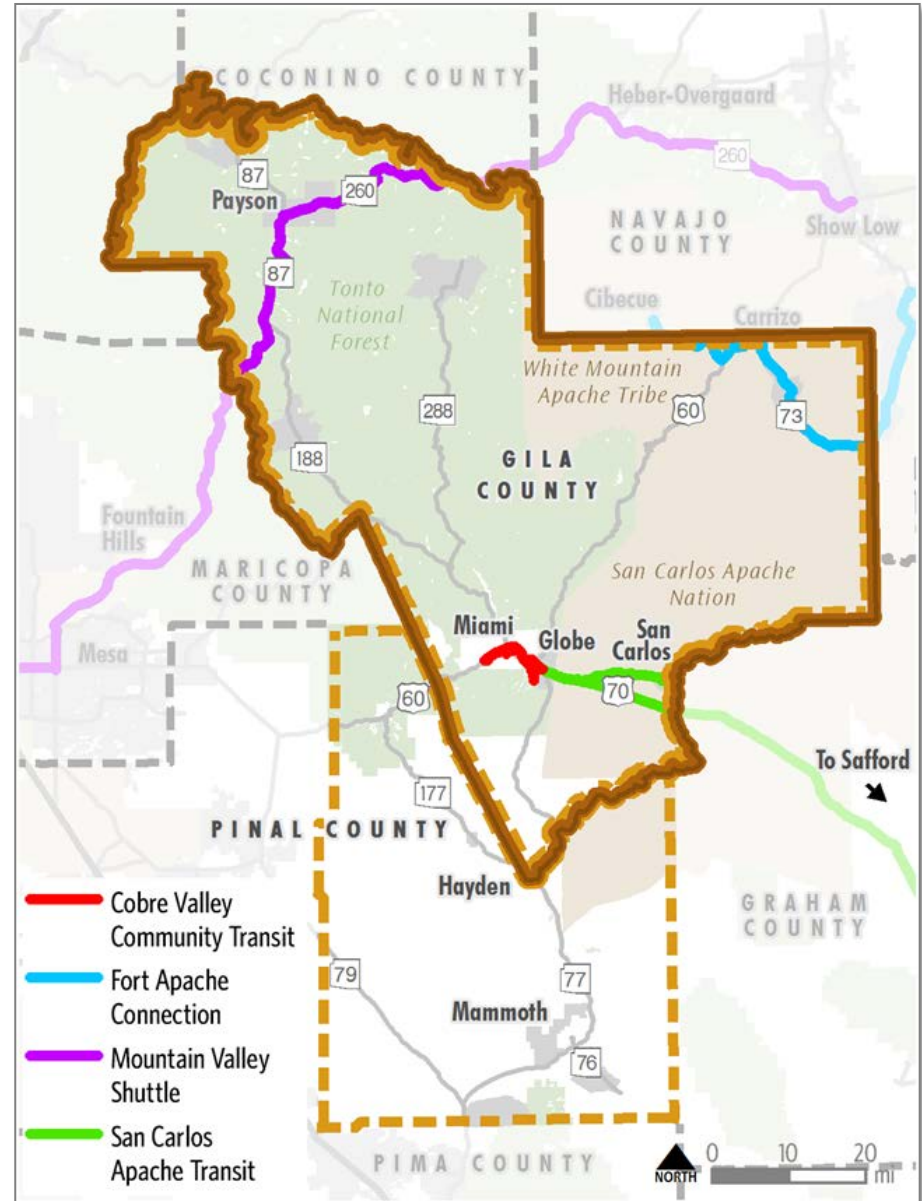
	Payson-Star Valley	Globe-Miami	San Carlos Apache Indian Reservation*	Focus Area	Pinal County Portion of Study Area
Total Households	7,707	3,633	2,330	20,909	13,515
Households With No Access to a Vehicle	6.6%	7.0%	24.6%	7.2%	4.3%

Inflow – Outflow Commuting Patterns

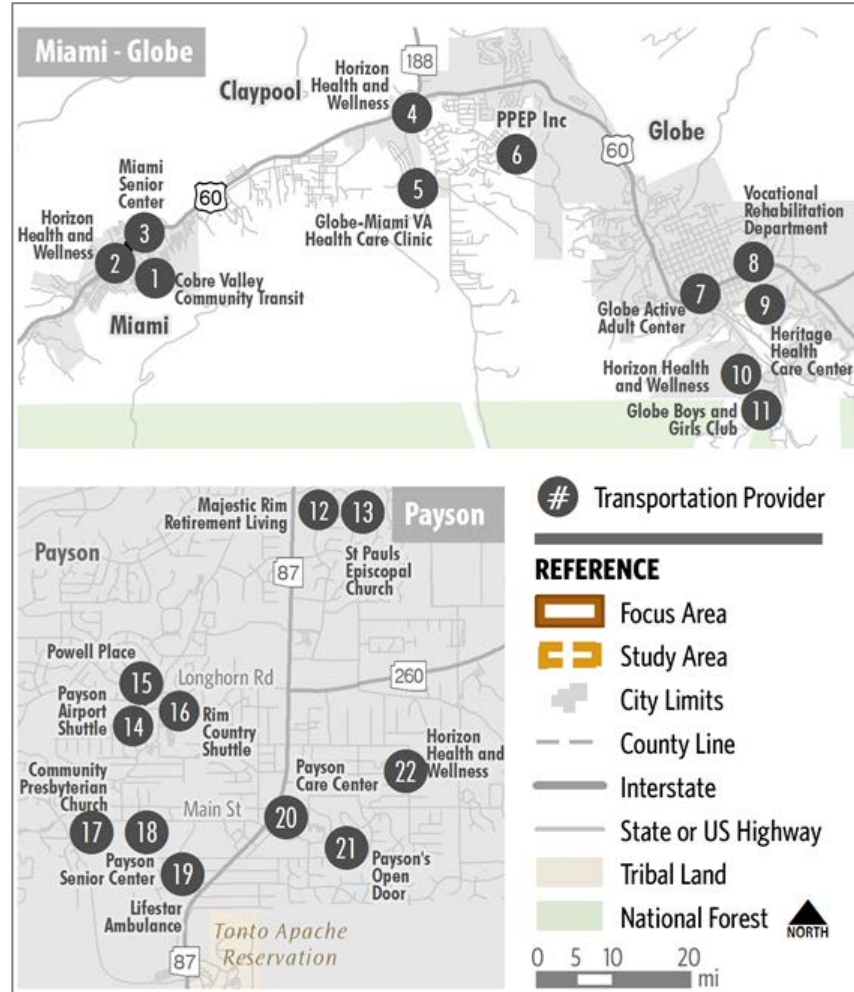
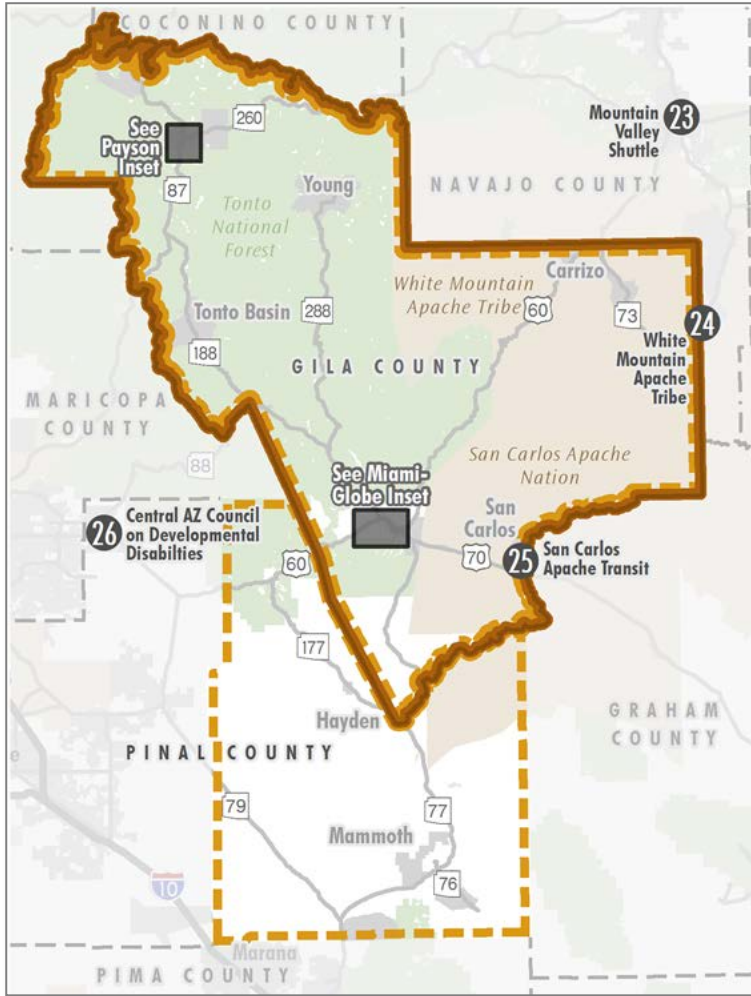


Existing Transit Services

- Cobre Valley Community Transit
- White Mountain Apache Tribe - Fort Apache Connection
- Mountain Valley Shuttle
- San Carlos Apache Transit - Nnee Bich'ó Nii



Existing Transit Services

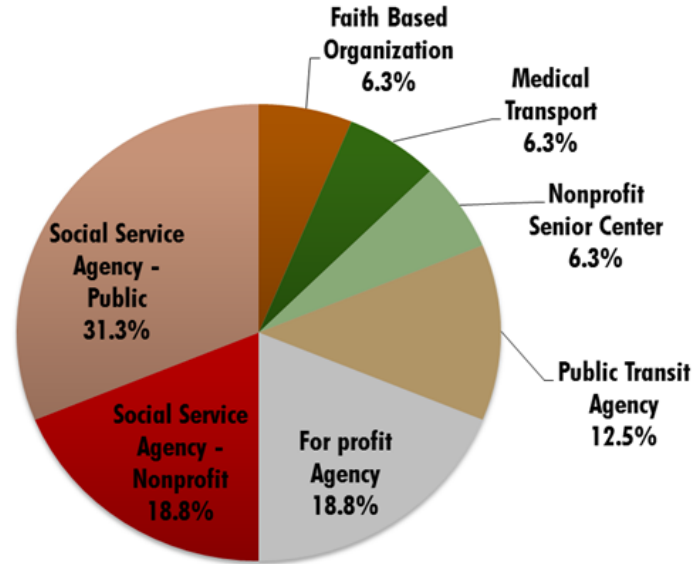


Outreach

- Technical Working Group - Meetings
- Stakeholders – Transit Service Providers Survey
- Public - Online Survey

Transit Service Providers Survey

Agency/Service Provide Type



Service Area and Major Providers

Globe – Miami Area	Payson Area	San Carlos – Peridot	Cibecue – Whiteriver	Regional	Statewide
Cobre Valley Community Transit	Community Presbyterian Church	San Carlos Apache Transit	Fort Apache Connection (White Mountain Apache Tribe)	Mountain Valley Shuttle	Horizon Health and Wellness
San Carlos Apache Transit	Payson Senior Center			Payson Airport Shuttle	Greyhound
Globe Boys and Girls Club	Lifestar Ambulance			Phoenix Veterans Affairs (VA) Transportation Department	
Globe Active Adult Center	Payson Care Center			Central Arizona Council on Developmental Disabilities	
Miami Senior Center				Pinal – Gila Council for Senior Centers	

Transit Service Providers Survey

Unmet Needs

- Cobre Valley Community Transit:
 - Shelters at key stops
 - More stops in Claypool and need stops at Taco Bell, AM/PM, close to hotels; serve high school
 - Restructure of fares and schedule, including weekend service
 - Need standardized fair break-points
- Mountain Valley Shuttle:
 - Need more business
 - Would like to better maintain vans
- San Carlos Apache Nnee Bich'ó Nii:
 - Regional dispatch center

Transit Service Providers Survey

Unmet Needs

- Payson Senior Center:
 - Service to Pine, Strawberry, Mesa de Caballo, Young
 - Service to transport medical patients seeking treatment
- White Mountain Apache Tribe: transportation division headquarters at Whiteriver airport
- Pinal-Gila Council for Senior Citizens: connecting services to/from fixed route pick-up stops
- Globe Active Adult Center: need service to take persons to doctor appointments, shopping, etc.

Transit Service Providers Survey

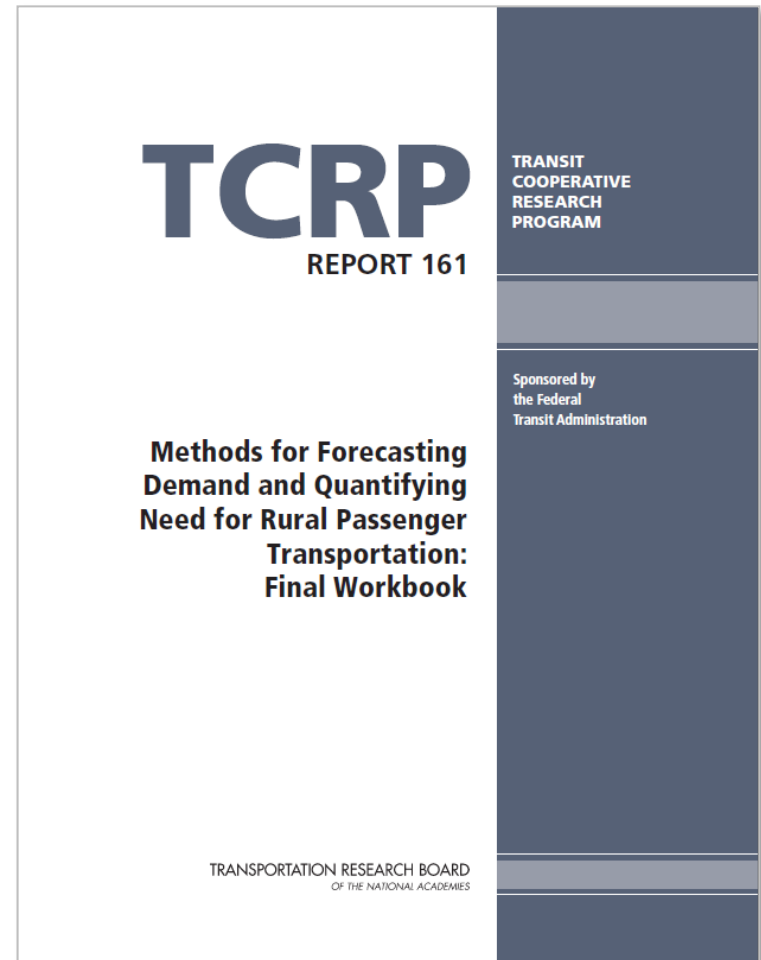
Future Plans

- 56 percent of surveyed providers have plans for expansion
- Cobre Valley Community Transit - Construct a new transit center
- San Carlos Apache Nnee Bich'ó Nii:
 - Provide service to Tucson
 - Implement "Copper Corridor" service (Globe - Winkleman - Superior - Miami - Globe)
- Payson Airport Shuttle: exploring airport shuttle service from the Globe-Miami area
- Phoenix VA Transportation Department: reviewing options for service to San Carlos and White Mountain Tribal areas
- White Mountain Apache Tribe:
 - Provide a seasonal connection with San Carlos Apache Transit

Transit Demand Analysis

Transit Needs and Demand

- Identify the need for public transit services and annual ridership (i.e. demand)
- Analysis includes:
 - Number of people likely to need passenger transportation
 - Number of person trips required by individuals without personal vehicles



Number of Persons Likely to Need Passenger Service

Persons residing in households with income below the poverty level



Persons residing in households owning no automobile



Total persons in need of passenger transportation service

TCRP Report 161 Variable	Globe-Miami	Payson-Star Valley	San Carlos Apache Indian Reservation*	Focus Area	Pinal County Portion of Study Area
Persons residing in households with income below the poverty level	1,828	2,270	5,125	11,839	3,833
Persons residing in households owning no automobile	462	928	1,466	2,994	629
Total persons in need of passenger transportation service	2,290	3,198	6,591	14,833	4,462

American Community Survey Tables B17001 and B08201, 2011-2012 5-Year Estimates
 Transit Cooperative Research (TCR) Program Report 161 – Method for Forecasting Demand and Quantifying Need for Rural Passenger Transportation

Person Trips

Number of Households having No Car



Mobility Gap (0.80)



Need (one-way trips per day)

TCRP Report 161 Variable	Globe-Miami	Payson-Star Valley	San Carlos Apache Indian Reservation*	Focus Area	Pinal County Portion of Study Area
Total households without access to vehicle	254	507	574	1,507	472
Arizona trips per capita On transit	0.80				
Total Transit Need					
Daily one-way transit trips	203	406	459	1,206	378
Annual one-way transit trips	60,960	121,680	137,760	361,680	113,280

*American Community Survey Tables B17001 and B08201, 2011-2012 5-Year Estimates
Transit Cooperative Research (TCR) Program Report 161 – Method for Forecasting Demand
and Quantifying Need for Rural Passenger Transportation*

Transit Demand

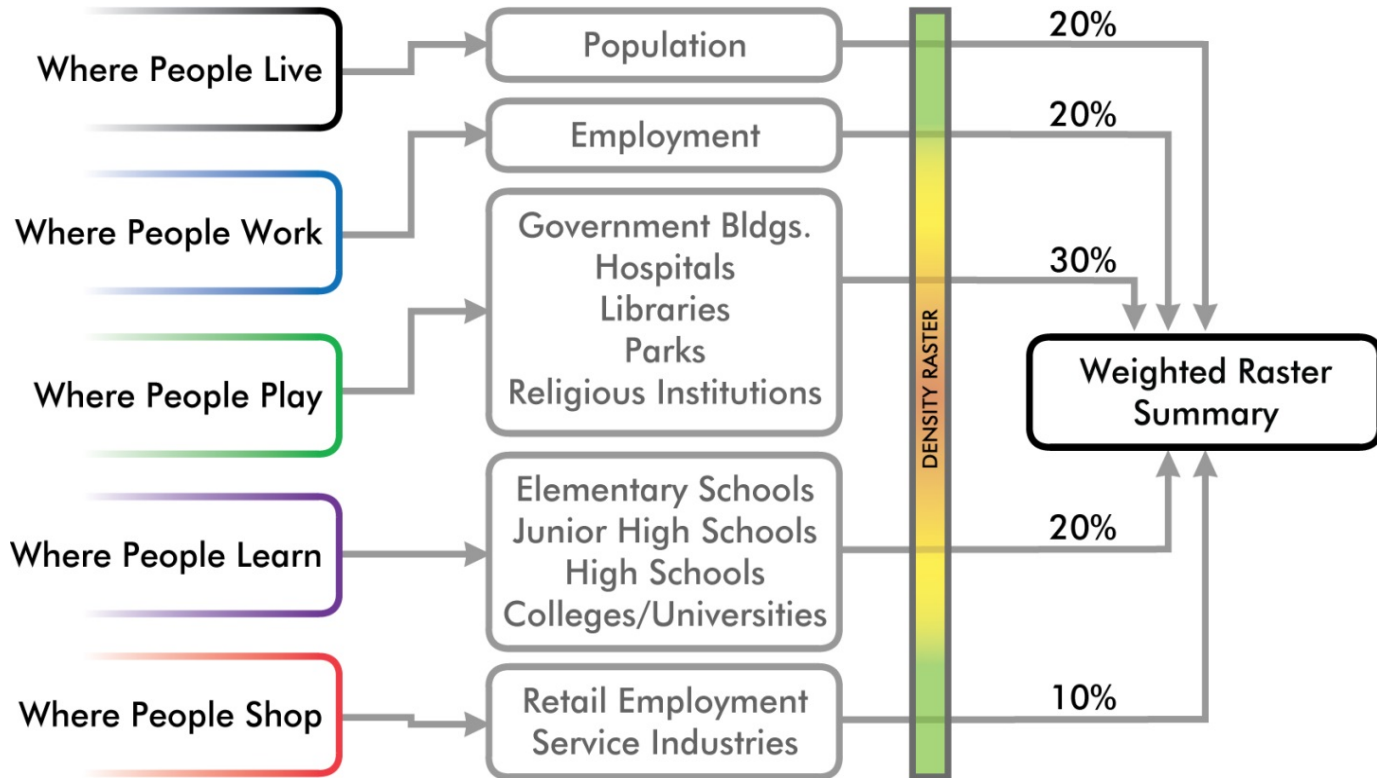


TCRP Report 161 Variable	Globe-Miami	Payson-Star Valley	San Carlos Apache Indian Reservation*	Focus Area	Pinal County Portion of Study Area
Population age 60 and older	2,362	7,671	1,042	17,627	16,883
Mobility limited population age 18 to 64	150	589	208	1,586	5,446
Residents of households having no vehicle	462	928	1,466	2,994	629
Non-program related passenger transportation demand	6,680	21,355	5,604	51,593	66,472

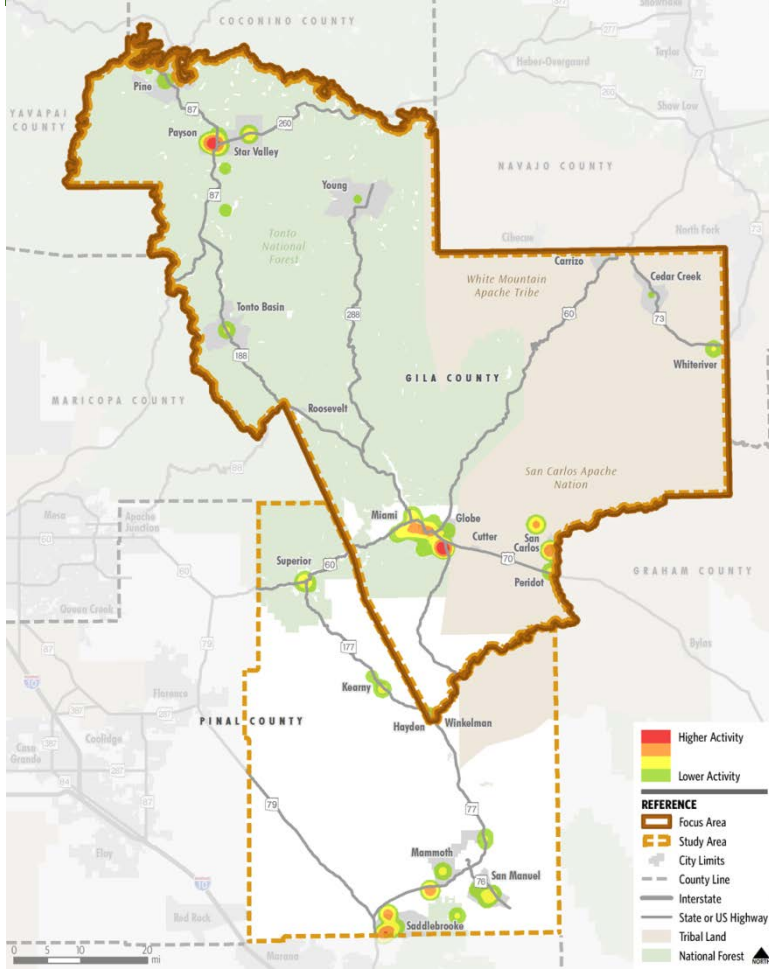
American Community Survey Tables B01001, B17001 and B08201, 2011-2012 5-Year Estimates
 Transit Cooperative Research (TCR) Program Report 161 – Method for Forecasting Demand and Quantifying
 Need for Rural Passenger Transportation

Transit Demand Model

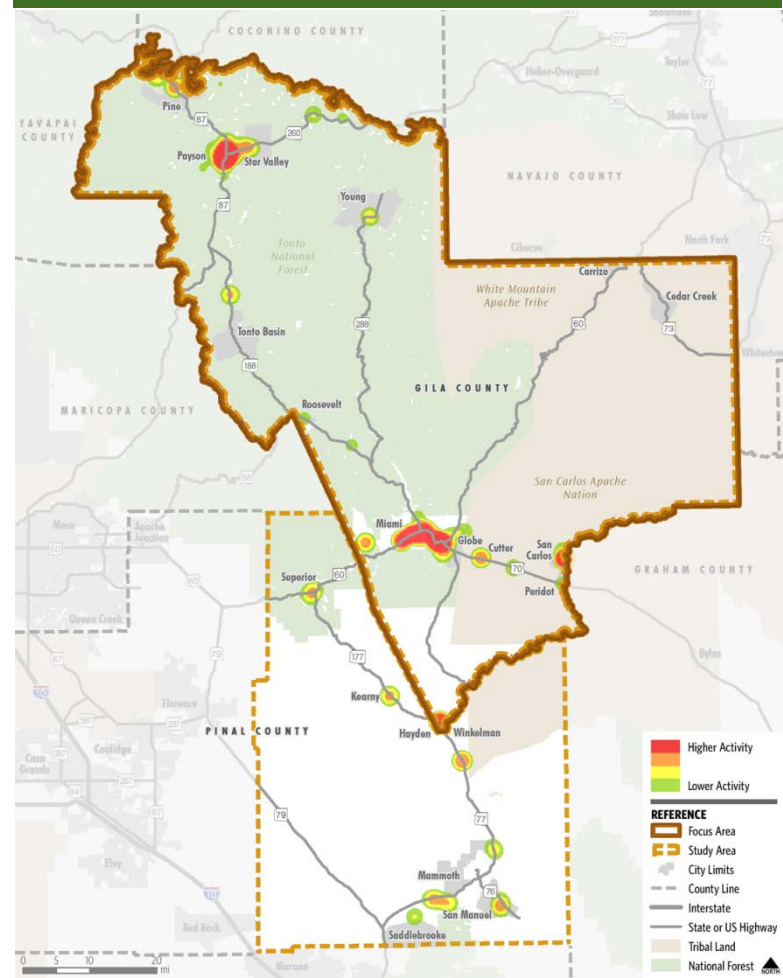
Points of Interest and Activity Center Transit Demand Model



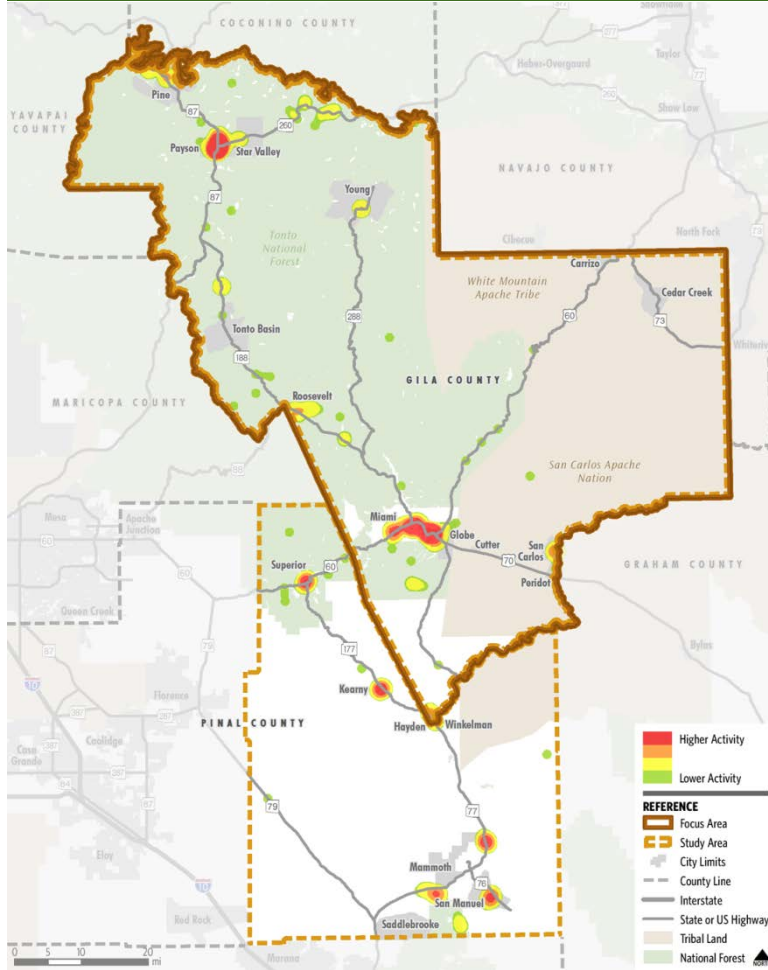
Where People Live



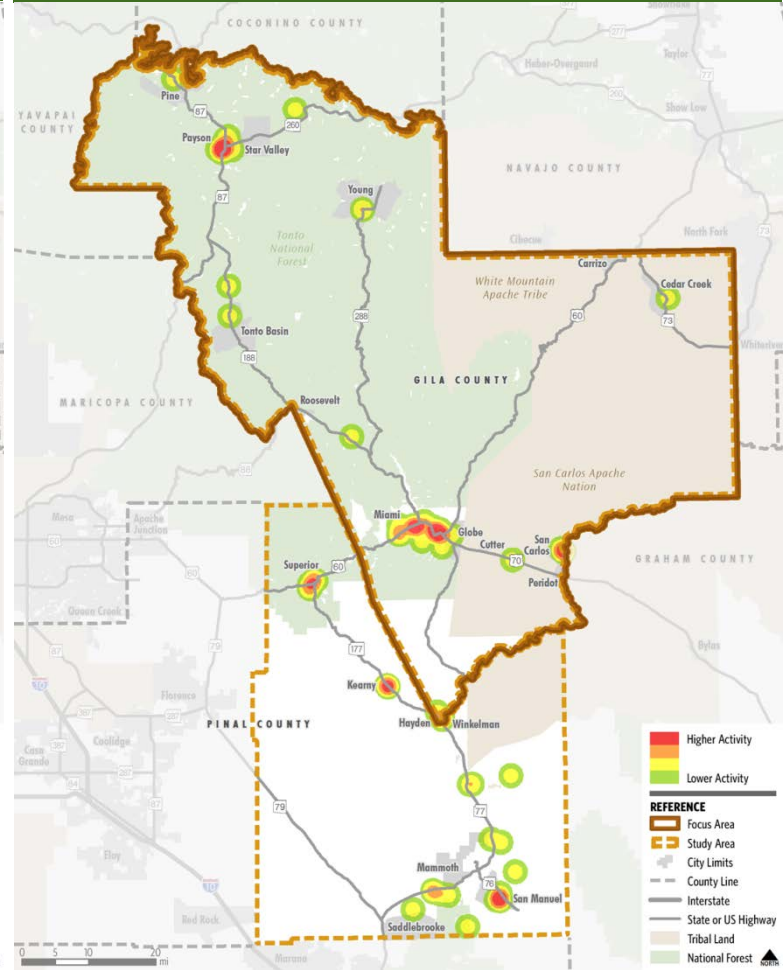
Where People Work



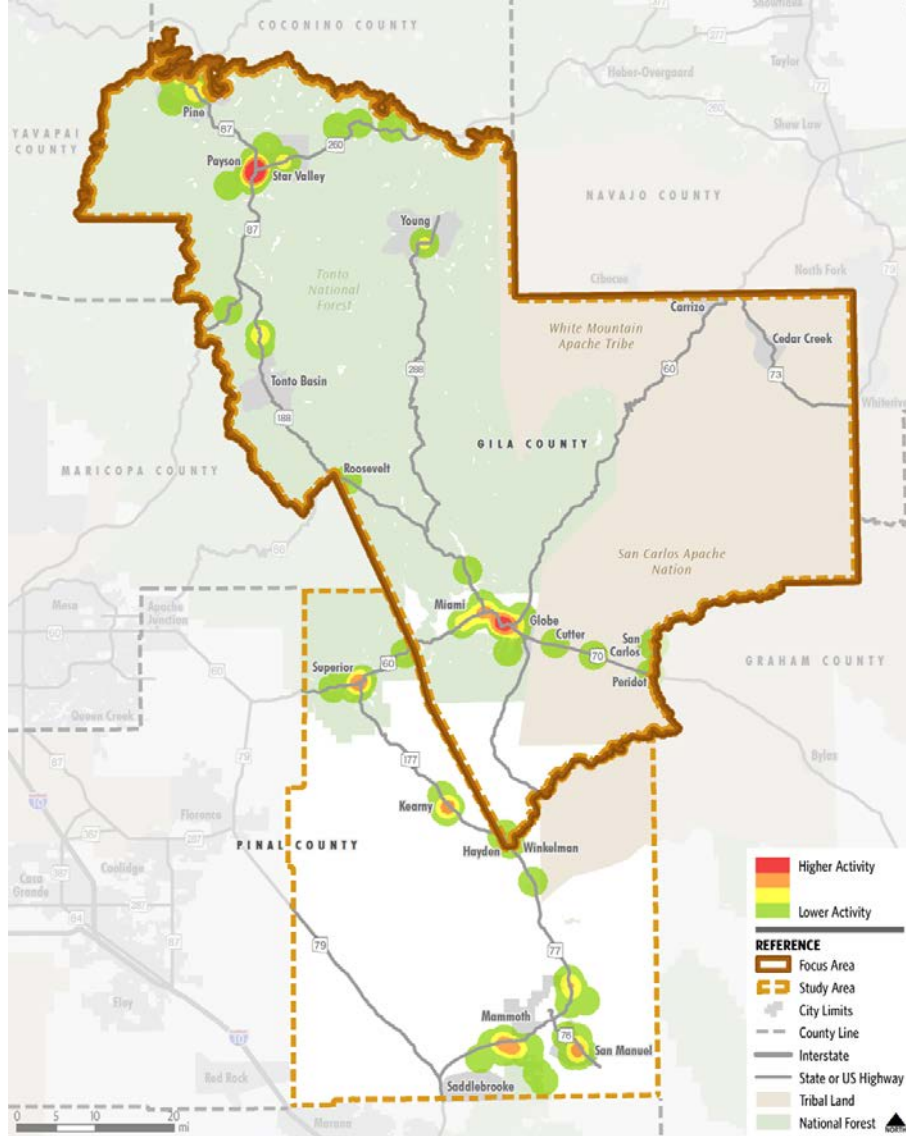
Where People Play



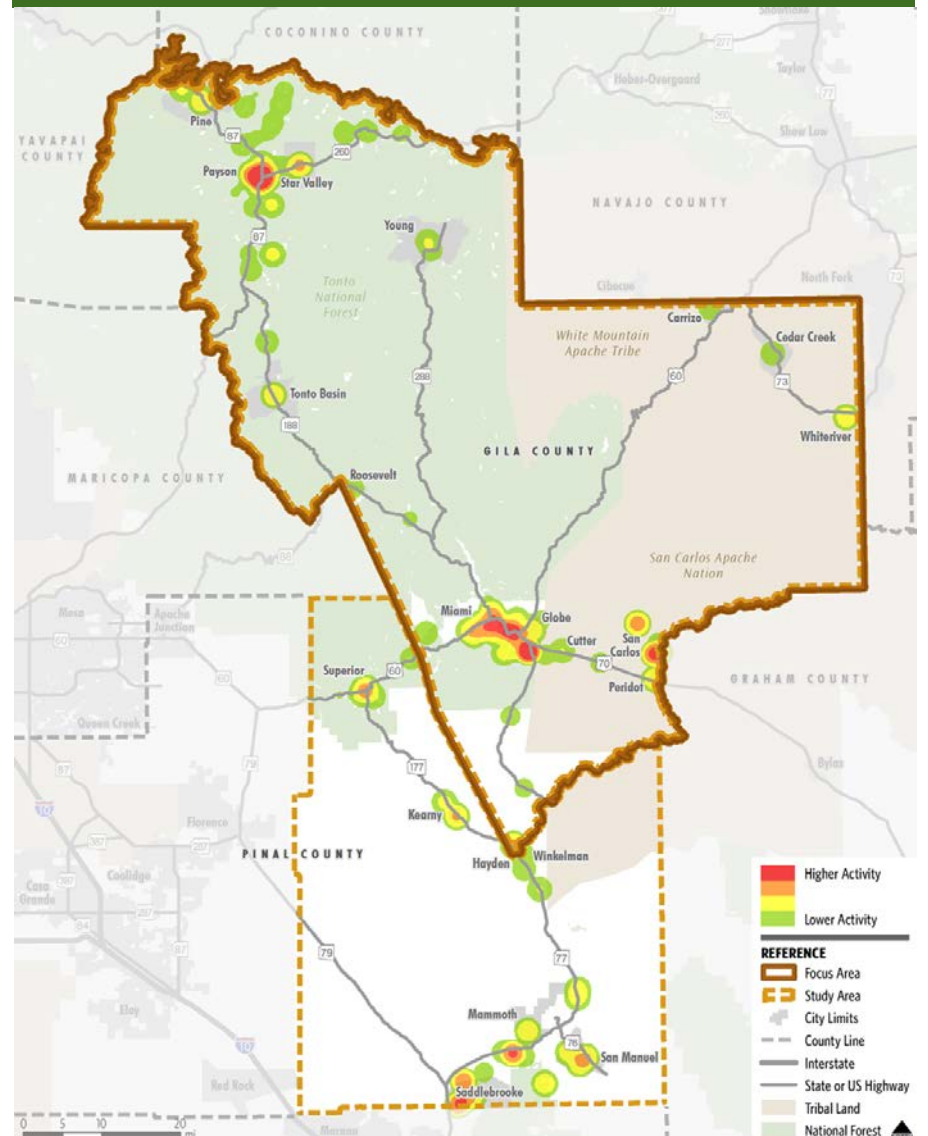
Where People Learn



Where People Shop



Composite Transit Demand Model



Public Needs Assessment Survey

Public Needs Assessment Survey

- On-line and hardcopy survey
- 408 respondents
- Survey collected information on:
 - Where residents are traveling
 - Transit needs
 - Common usages of transportation
 - Access to vehicles
 - Thoughts on public transportation

HELP SHAPE FUTURE TRANSIT

To plan for the region's future, we are conducting a short survey to understand your transit needs. This information will help develop a plan for transit improvements.

FOR QUICKER ENTRY - SUBMIT SURVEY ON-LINE AT:
www.SurveyMonkey.com/R/CAGtransitSurvey

TAKE THE SURVEY TO WIN ONE OF TWO \$50 VISA GIFT CARDS!

ABOUT YOU AND YOUR TRAVEL

1) Where do you live? City/Town: _____ Closest Intersection/Crossroad: _____

2) Are you currently employed or in school? (check all that apply)
 Employed (in what city): _____ School (name): _____ Neither
 Closest Intersection/Crossroad: _____

3) How far do you travel to work or school? <10 miles 10-20 miles 20-30 miles >30 miles

4) What is your age range? Under 18 18-34 35-49 50-64 65 and older Prefer not to answer

5) What form of transportation do you most commonly use? (check all that apply)
 Drive myself Taxi/Uber
 Get a ride with family member or friend / carpool Bus or van operated by senior center, community organization, or other agency
 Public transit system → Name: _____
 Ride a bike or walk
 Vanpool Other: _____

6) On average, how many times a week do you travel to the following places and why?

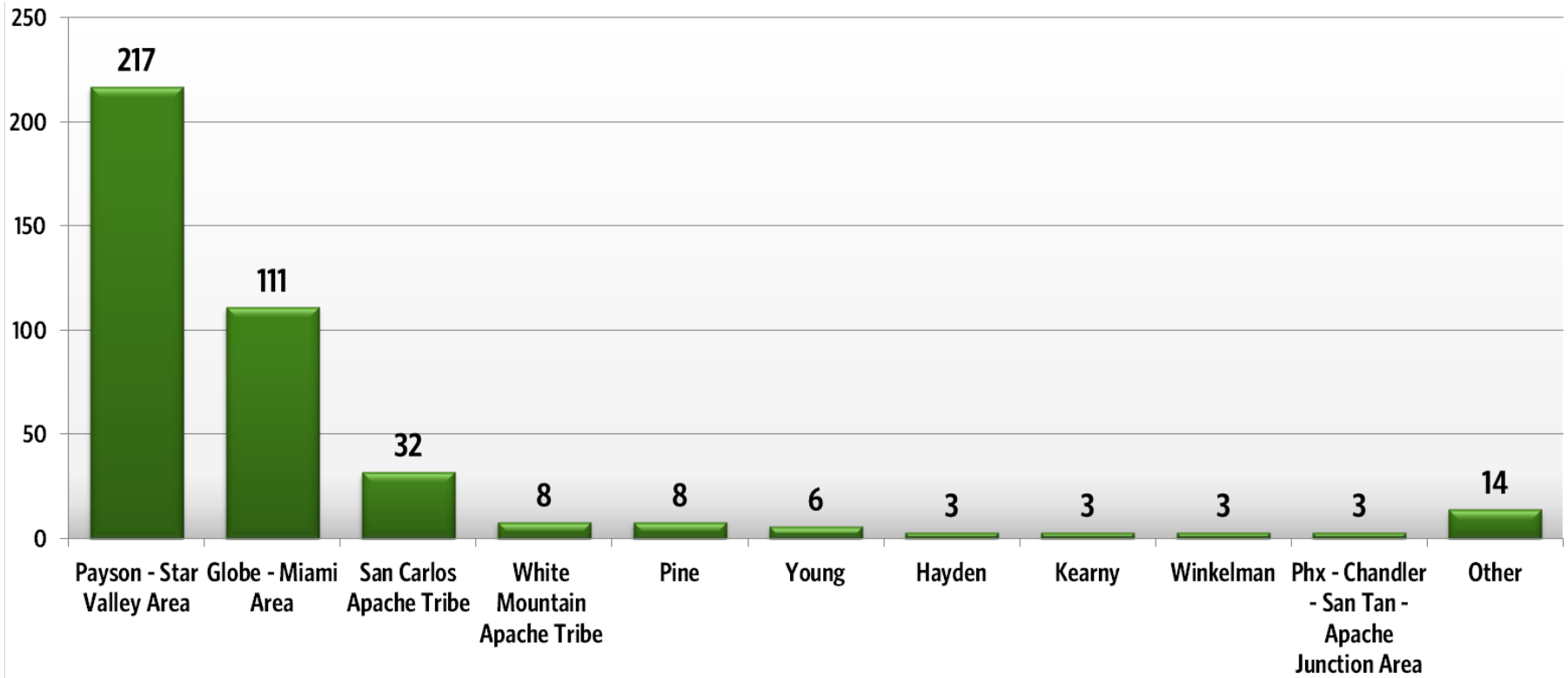
Destination	Employment	Shopping	Medical	Visiting Friends/family	School/College	Other
Globe						
Miami						
San Carlos						
Peridot						
Bylas						
Payson						
Star Valley						
Other Gila County						
Casa Grande						
Phoenix metro						
Tucson metro						
Other						

7) Do you have access to a car? Yes (always) Sometimes No

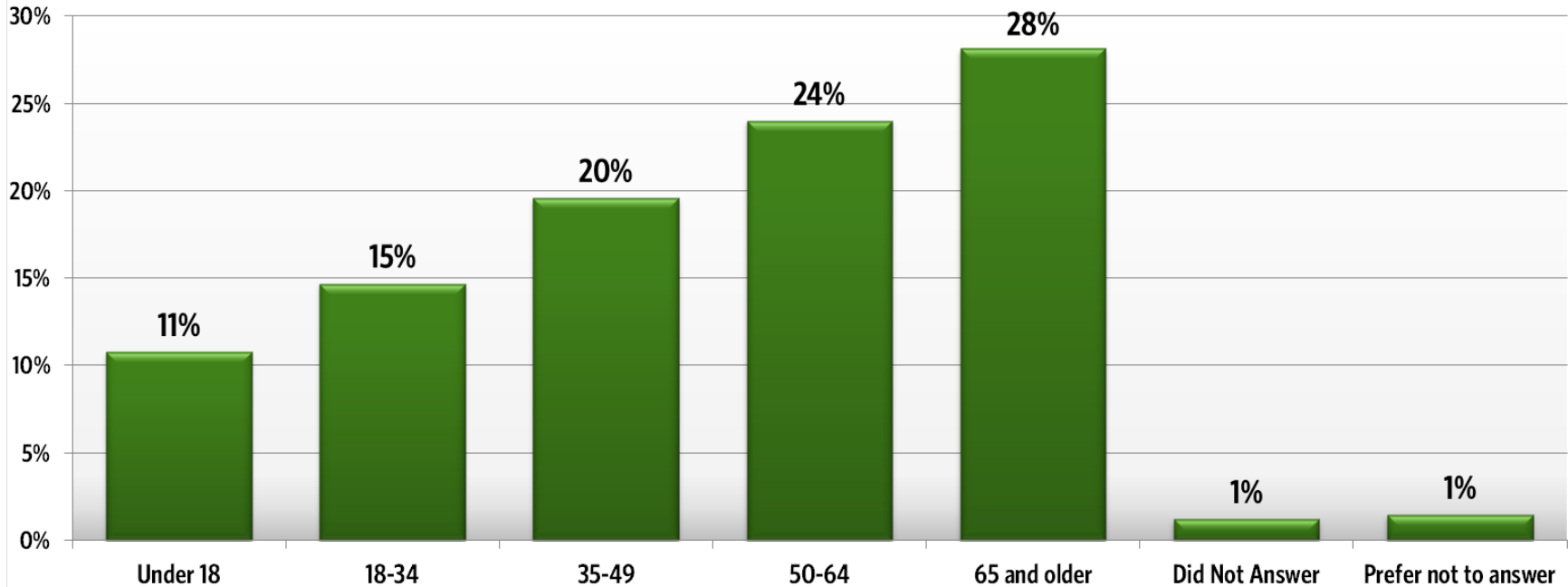
8) In the last 12 months, have you missed a medical appointment, school, or work due to lack of transportation? Yes No

9) What keeps you from getting where you need to go? (check all that apply)
 I do not have a car Available public transportation does not meet my needs
 Nobody is available to drive me → Why Not? (check all that apply)
 No public transportation services available for my trips Bikes too long
 I don't know the public transportation options Requires advance reservations
 I don't feel comfortable using public transportation Not available on days or times I need to travel
 Service costs too much
 Does not meet my needs due to my disability

Where Respondents Live

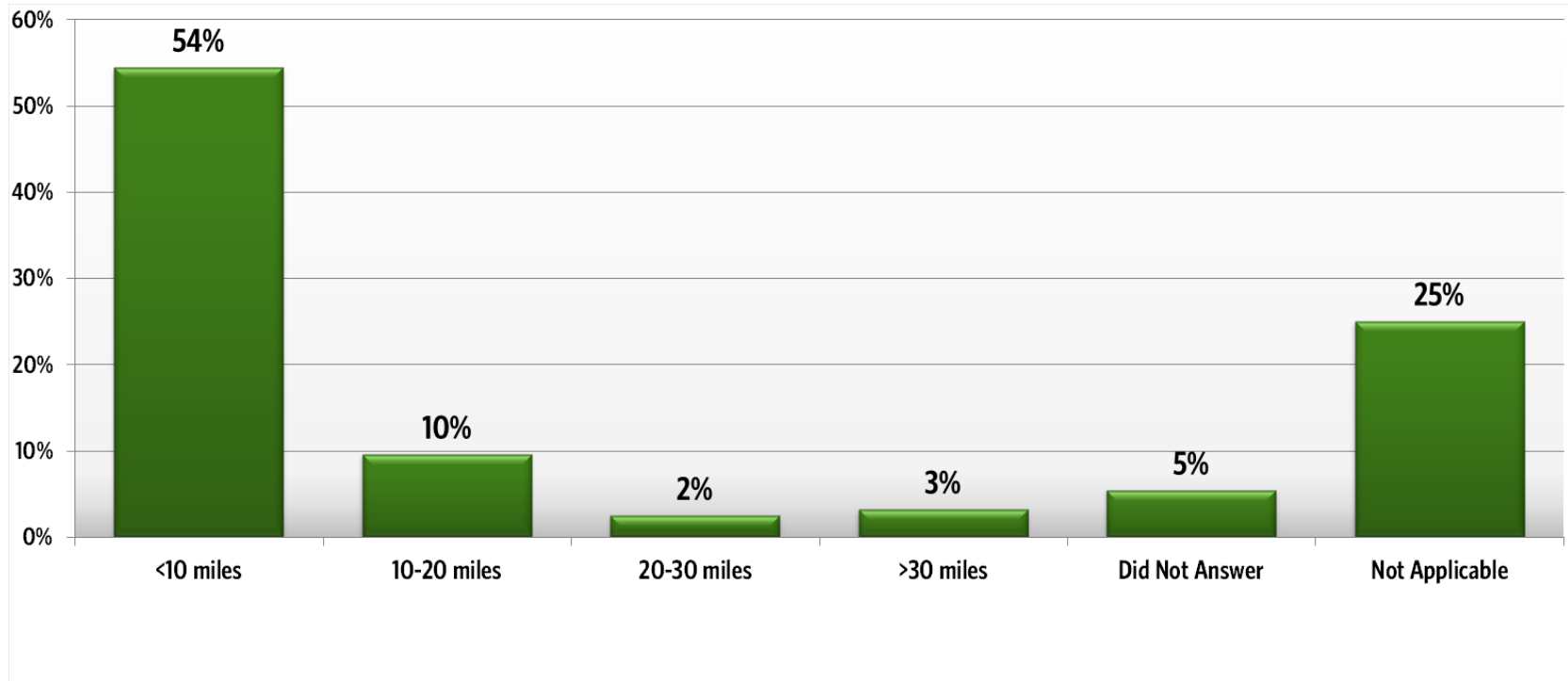


Age of Respondents

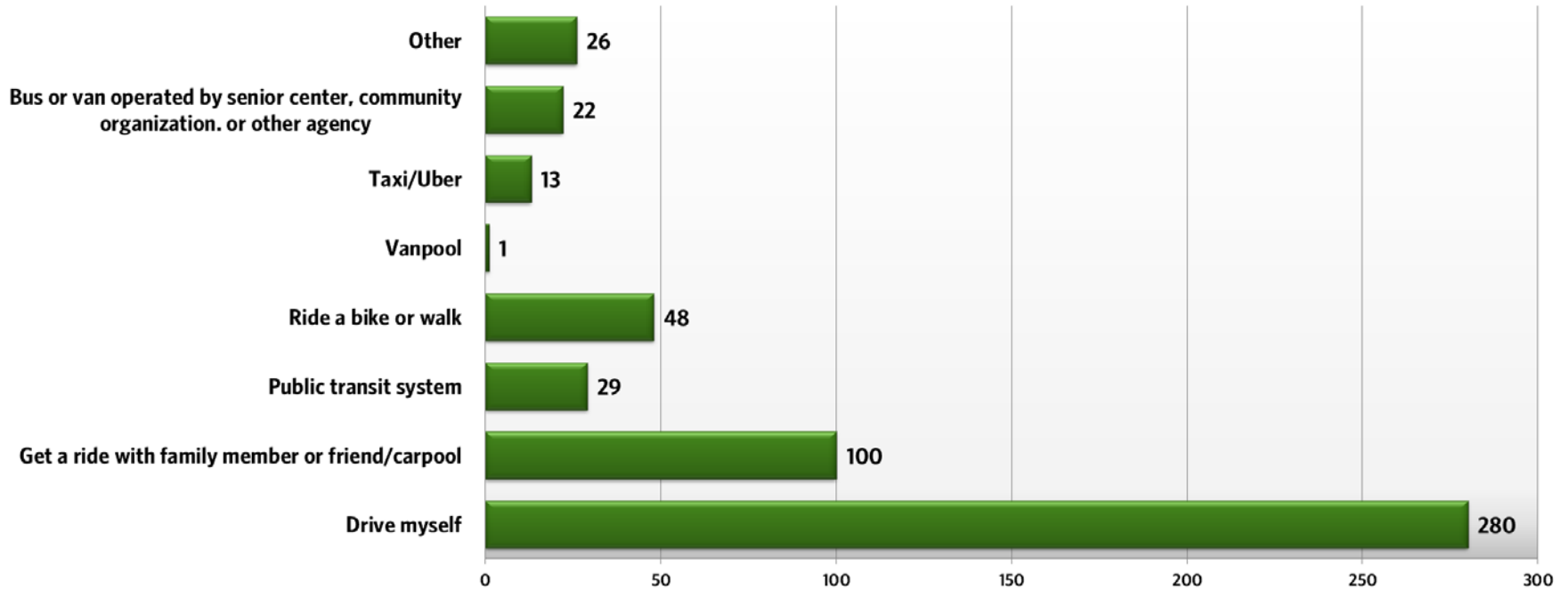


- 75% of *65 and older* reside in Payson-Star Valley area
- Globe- Miami respondents – 36% are under 18 years of age
- San Carlos Apache Tribe – 44% are age 18-34

Distance Traveled to Work or School



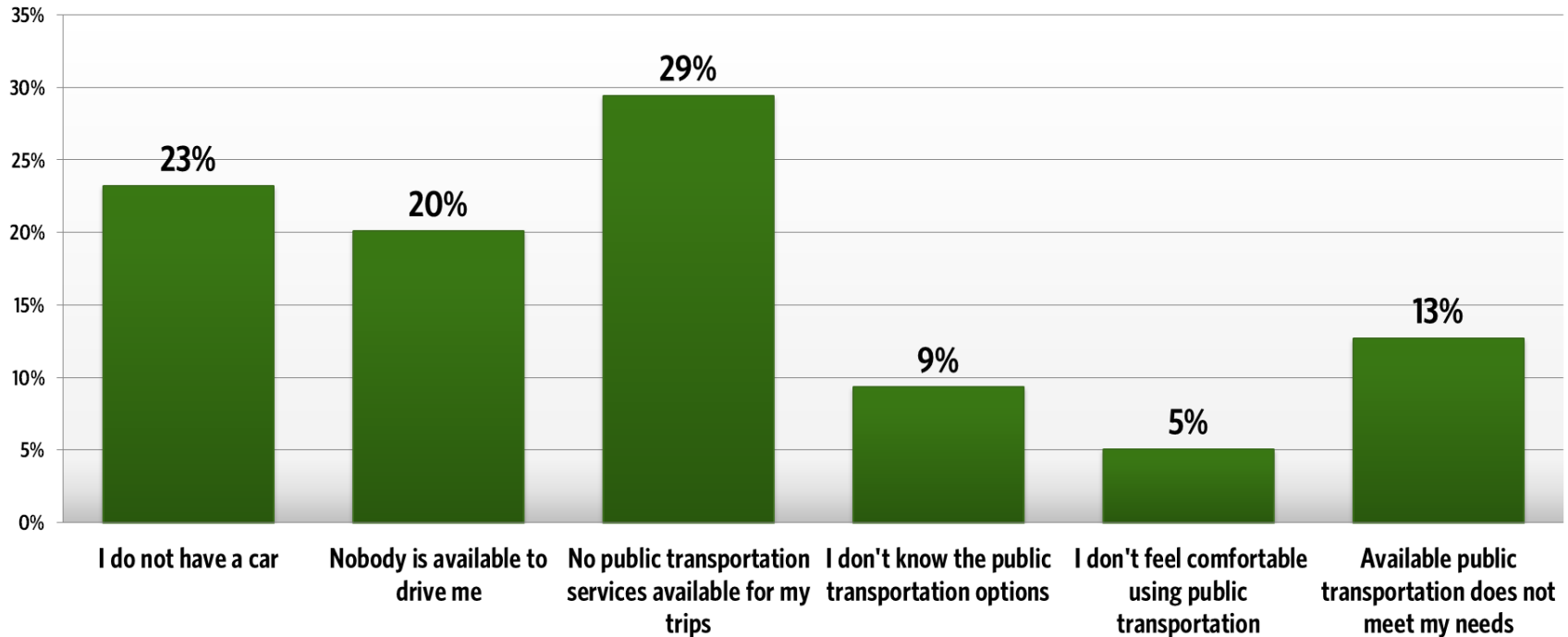
Form of Transportation Most Commonly Used



- 62% of public transit riders reside in Globe-Miami
- 46% of “get a ride or carpool” reside in Globe-Miami
- 84% of Payson-Star Valley residents drive themselves

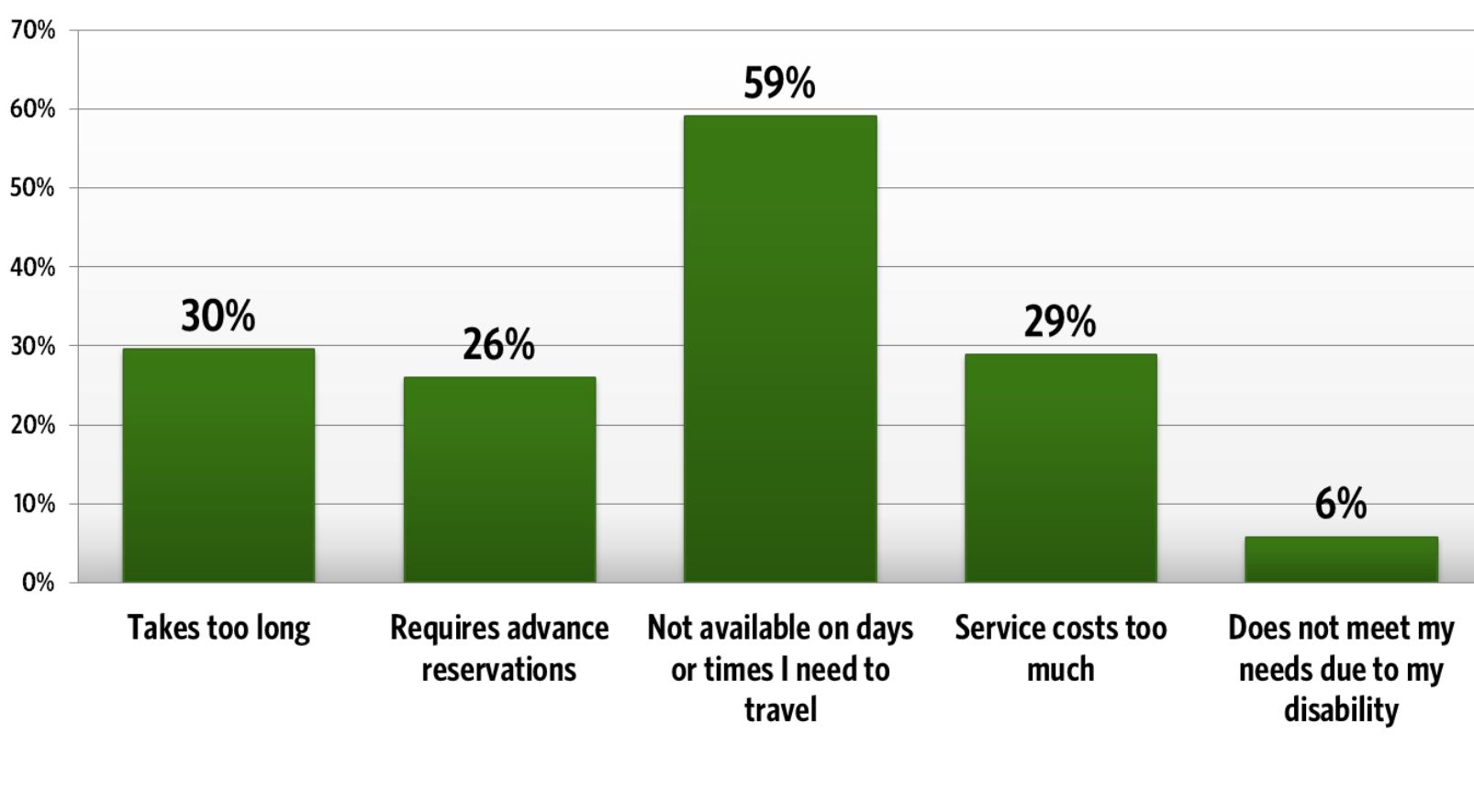
Respondents were able to select multiple answers

What Keeps You from Where You're Going?



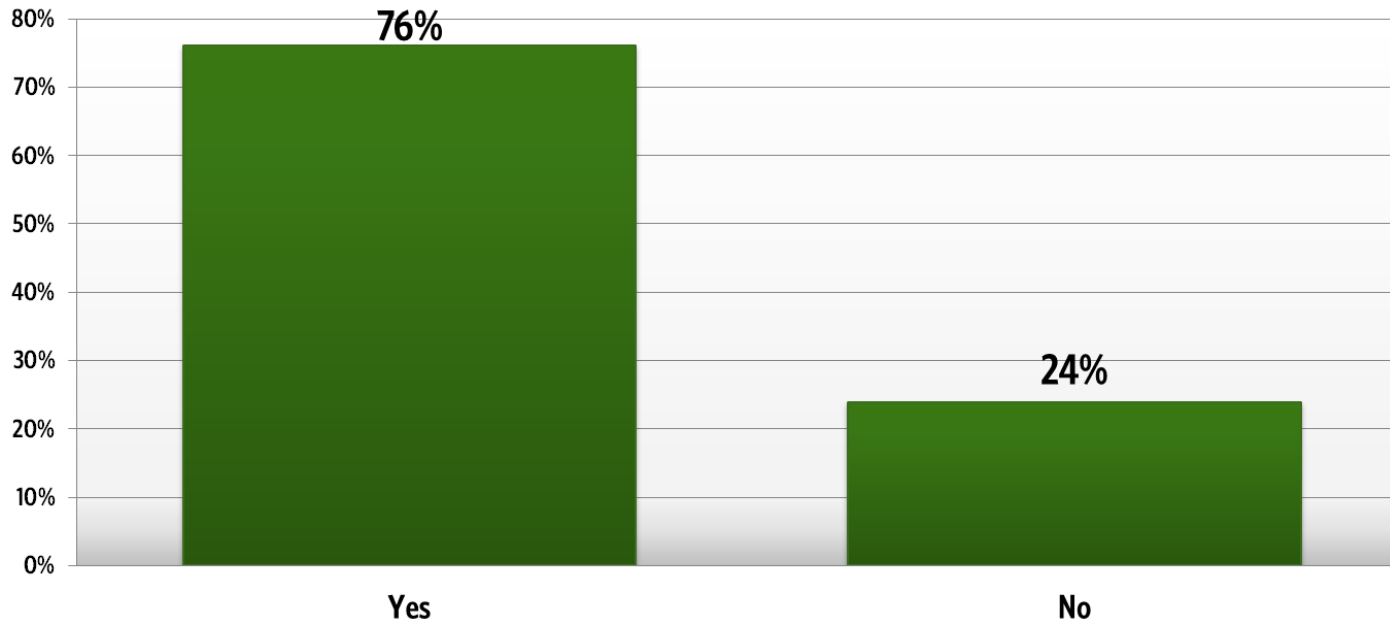
Respondents were able to select multiple answers

If available public transportation does not meet your needs, why not?

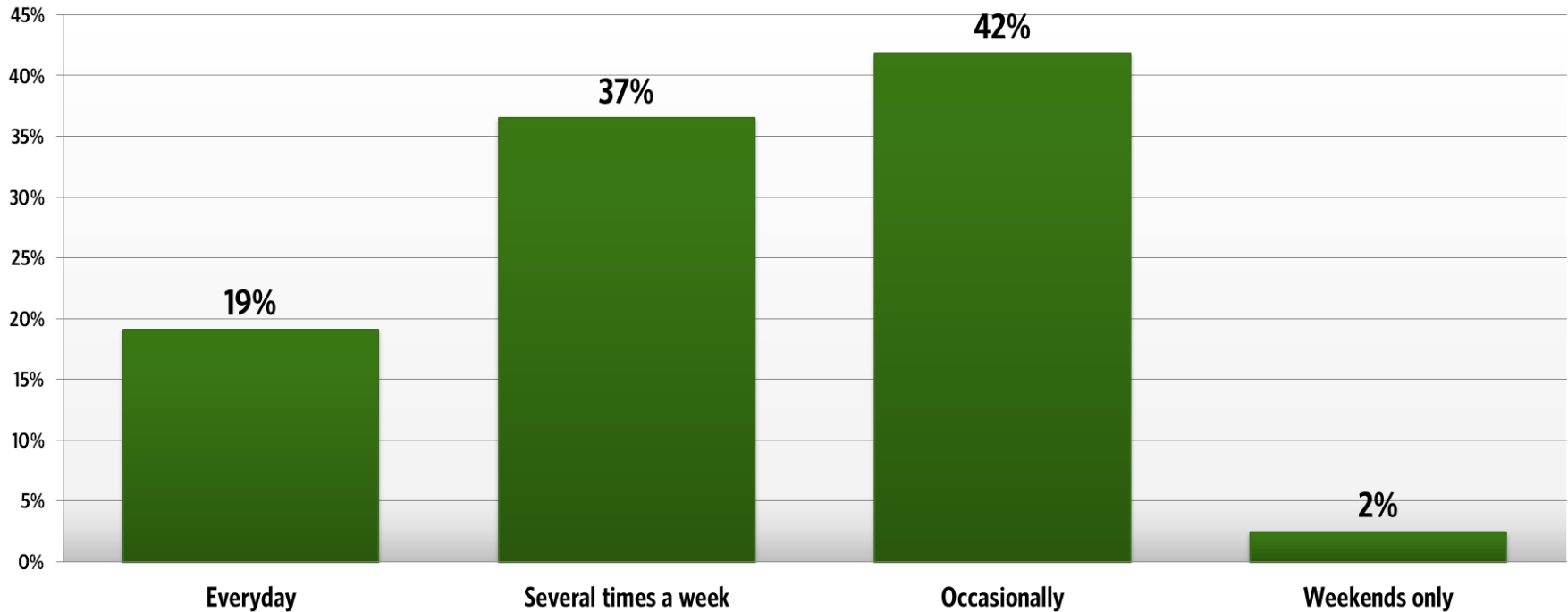


Respondents were able to select multiple answers

If public transportation were available, would you use it?

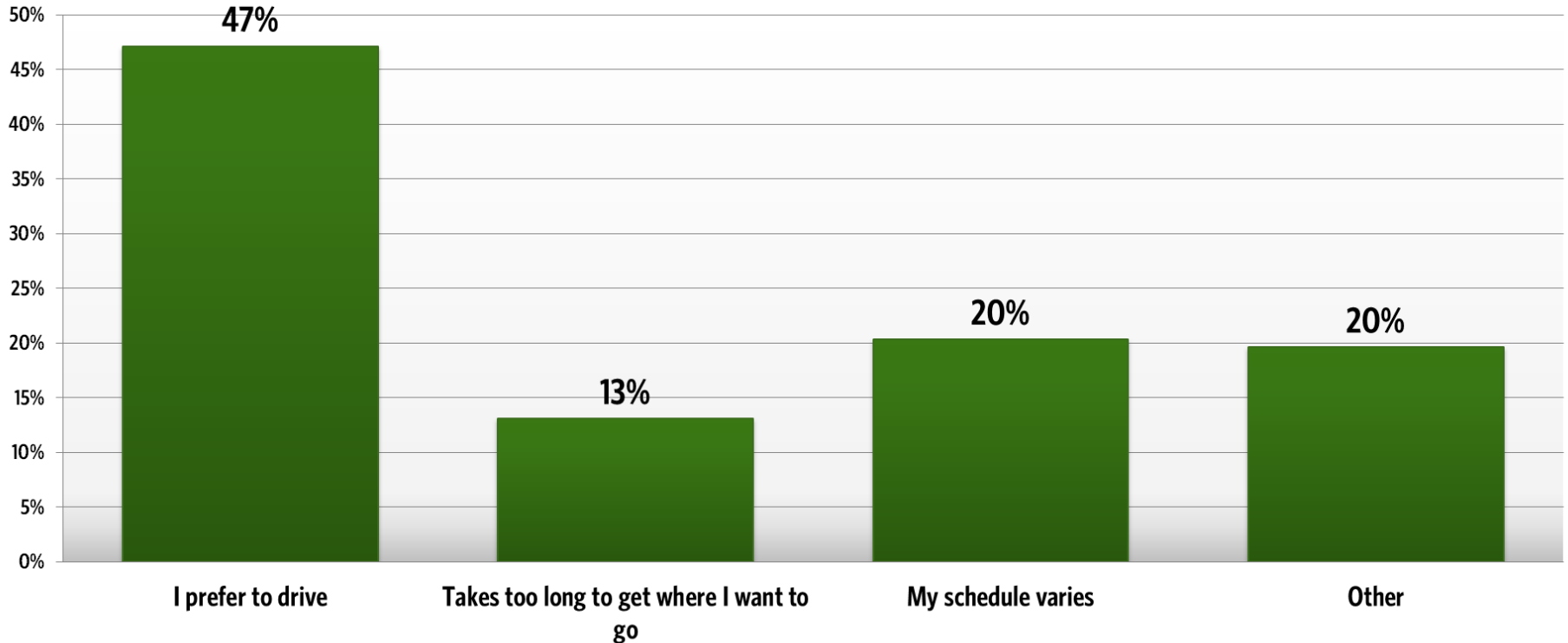


If yes, how often would you use transit?



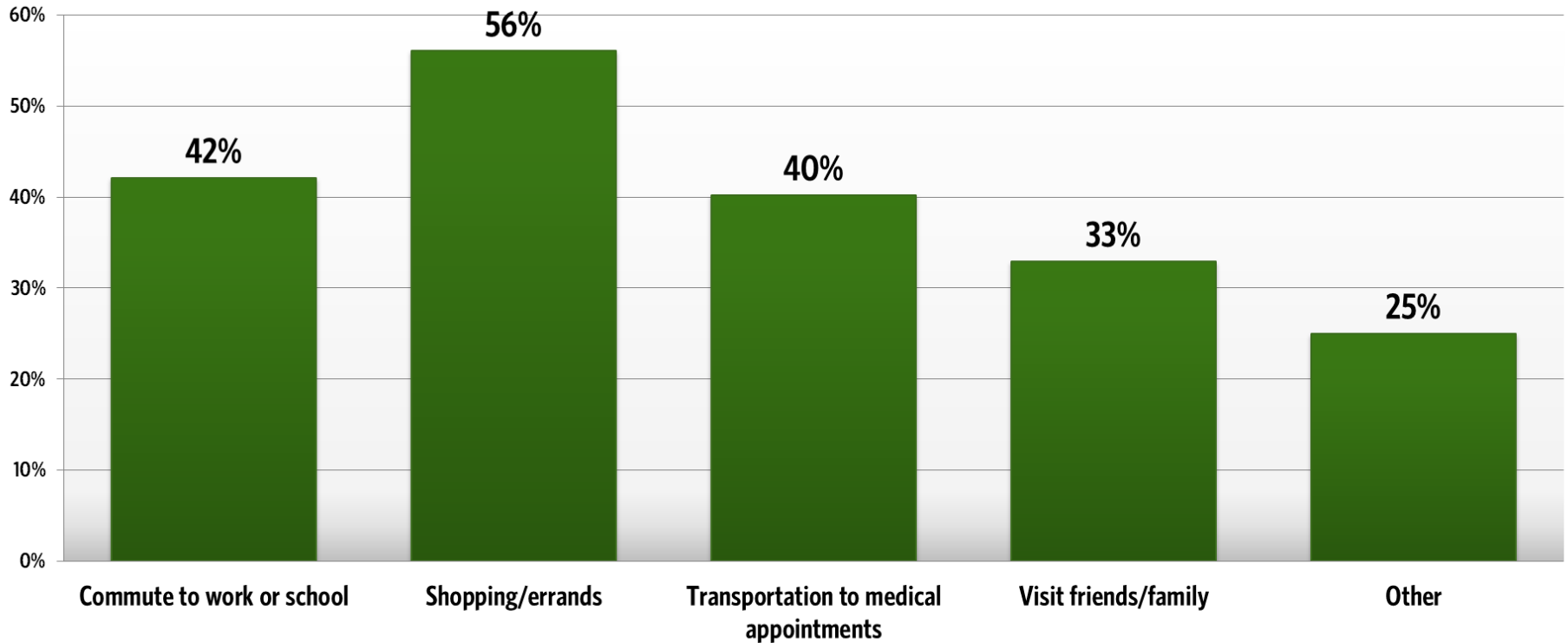
Respondents were able to select multiple answers

If no, reason for not using public transit?



Respondents were able to select multiple answers

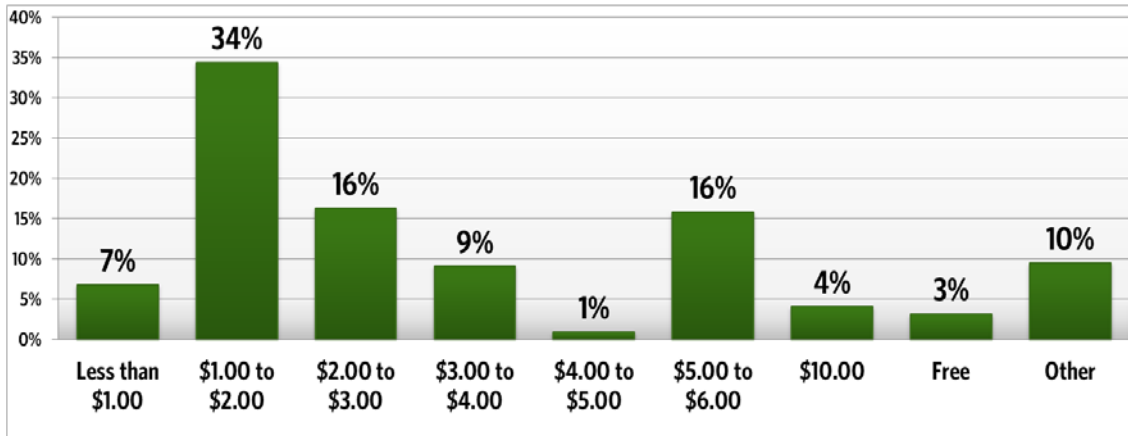
What would you most likely use public transportation for?



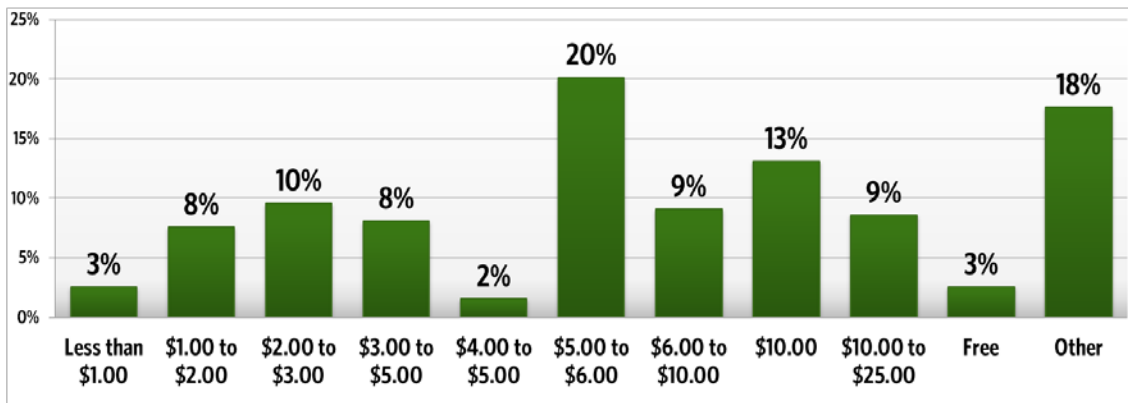
Respondents were able to select multiple answers

How much would you pay for a one-way ride?

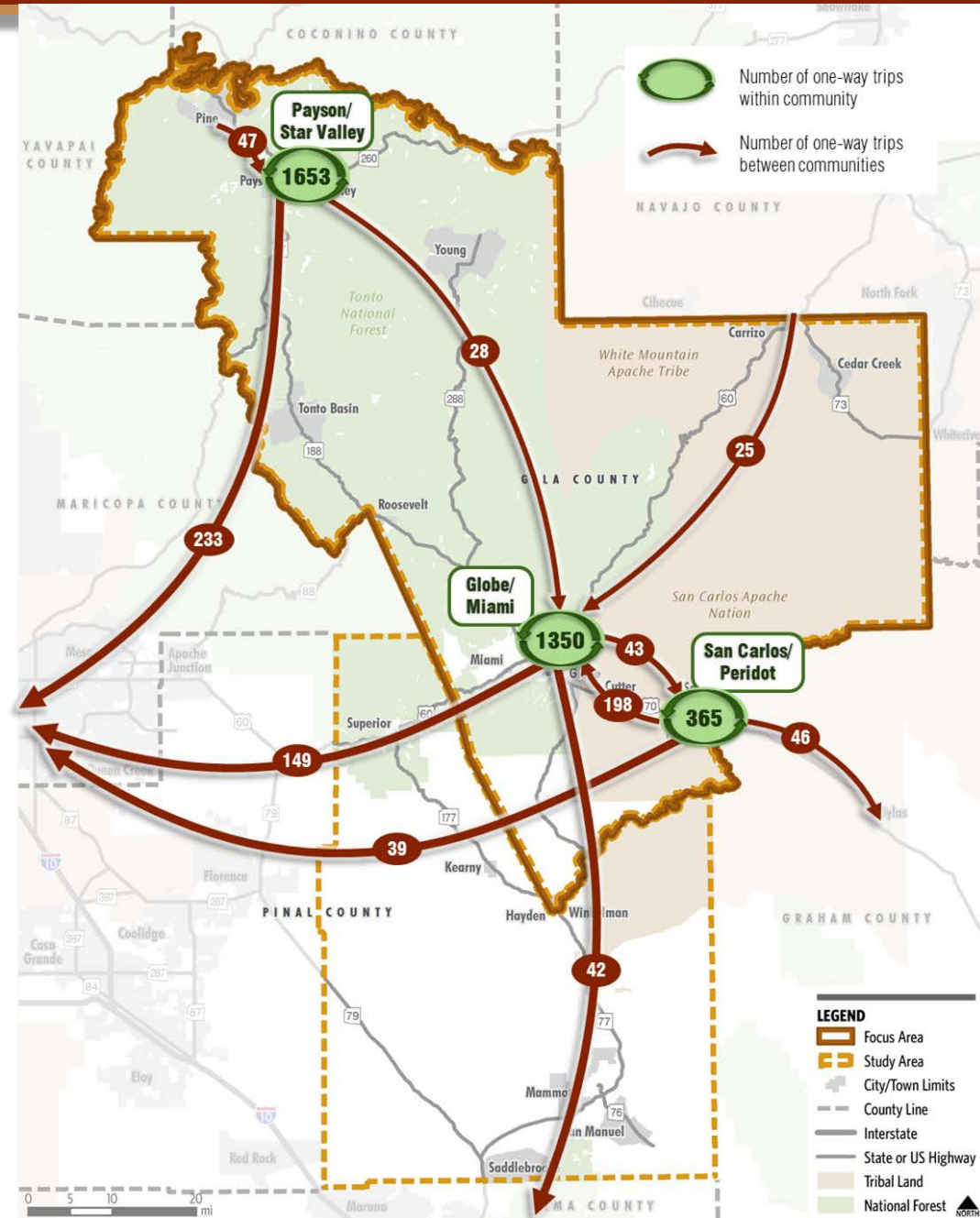
Within a Community



Between Communities



Frequent Origins and Destinations



Challenges

- Population, activity centers, and employment density in Gila County is fairly low
- Gila County is an automobile-oriented area, with long-distance commute times, limited pedestrian infrastructure, and long walking distances off main roads
- Geography: long distances between the residential, employment, and service centers
- Lack of education and marketing creates an information gap

Recommendations – Payson/Star Valley Area

Transit User Type

Transit-Dependent Persons are those without access to automobiles. These include persons who due to age or physical limitations are unable to drive and persons who cannot afford to own and operate an automobile.

Choice Riders are individuals who own or have access to automobile transportation but who, if provided with feasible options, would choose transit for some of their trips for reasons of economy or convenience.

Persons With Special Needs comprise, in effect, a subset of the transit dependent population. These are persons who are not only unable to drive, but who also must make periodic trips for medical reasons.

Transit Supporting Factors

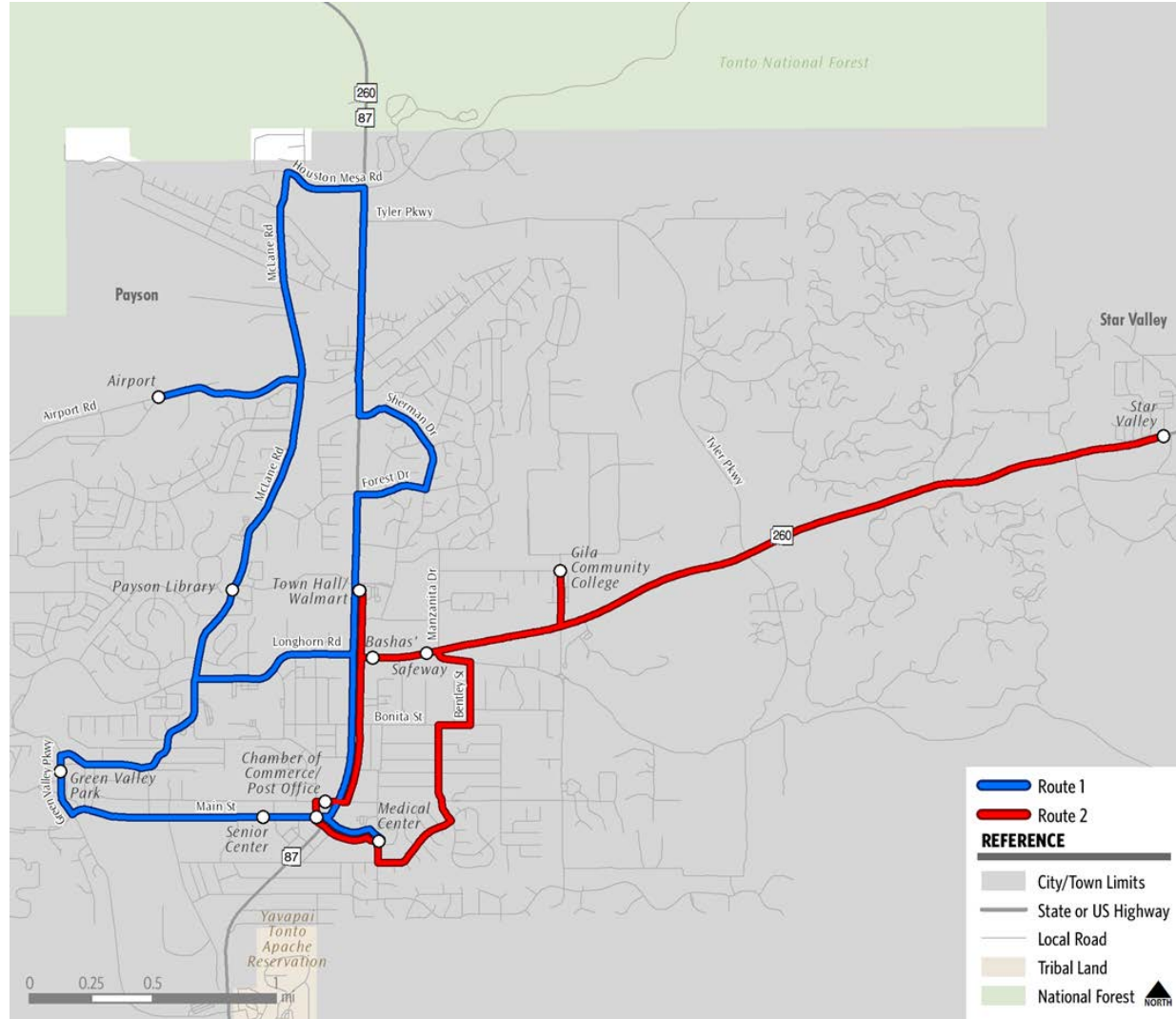
Payson-Star Valley area population:

- 35 percent elderly population (highest in the County)
- 13 percent of population is below poverty
- 9 percent female head of household with children under 18 and no husband present
- 62 percent of survey respondents in Payson-Star Valley stated that they would use public transportation if it were available
- 27 percent of survey respondents in Payson-Star Valley area commented that they would utilize public transportation for medical appointments and picking-up prescriptions
- 23 percent of population in Payson-Star Valley is mobility limited

Recommendations – Payson/Star Valley Area

Two deviated fixed-route service routes:

- **Route 1** is a loop route of approximately 9.4 miles. Provides access to key activity centers in the Payson area
- **Route 2** serves as a connection between Payson and Star Valley
- Deviations may be made to pick-up/drop-off persons meeting ADA and/or other criteria



Recommendations – Payson/Star Valley Area

- Demand-response service with the following options:
 - Short-term: Current non-profit entities would continue to provide transportation services for the most vulnerable population groups
 - Long-term: Payson-Star Valley transit system would establish a dial-a-ride service

Recommendations – Globe/Miami Area

Changes to Existing Service:

- Expand the existing service route to include a larger portion of Miami
- Evaluate and remove low ridership bus stops
- Evaluate the current fare system
 - Current fare prices are low
 - Develop a new fare zone structure
 - Enforce reduced fare options
- Install shelters with benches and with ADA access at least at key stops
- Install proper signage at each stop

Recommendations – Globe/Miami Area

- Develop a marketing and advertising plan
 - Establish strong online identity:
 - Create and maintain a dedicated website
 - Expand outreach using social media sites
 - Publish transit routes and schedules on Google Transit
 - Develop partnerships with local college, schools, big box stores, grocery stores, major employers, post office, and hospitals
 - Conduct outreach using traditional local media (newspapers and radio) and at community events
- Collaborate with other transit providers

Recommendations – San Carlos Apache Transit

- Establish a regional dispatch center
- Publish transit routes and schedules on Google Transit
- Partner with and coordinate service schedules and transfer locations with other transit providers
- Evaluate the feasibility of a seasonal connection to White Mountain Apache Tribe communities
- Assess the need and feasibility of a deviated fixed-route connection from Oro Valley to the Apache Sky Casino
- Explore the need and feasibility of a deviated fixed-route connection to the Payson-Star Valley area

Recommendations – Countywide/Regional

Develop a regional system. Two options –

- Option 1: Establish a CAG region-wide public transit agency
 - CAG or a similar agency would manage and operate transit services as one entity
- Option 2: Establish a central contact (agency or person) to coordinate all transit services (public and private) in Gila County
 - Each individual provider/operator will operate independently but will closely coordinate services and operations with the central contact

Recommendations – Countywide/Regional

Transit agency responsibilities

- Create a Technical Working Group
- Develop a comprehensive list of providers in the region
- Develop an electronic database of service routes and schedules.
- Publish countywide services on Google Transit
- Identify and resolve any service overlaps and redundancies
- Identify areas where resources can be pooled
- Establish a countywide ride-sharing program
- Assist with obtaining funding
- Assist with marketing and administration services
- Create and manage a pool of volunteers

Recommendations to Carry Forward

Next Steps

- Finalize Feasibility Report
- Develop Implementation Plan

Thank
you.

*Payson Senior
Center
for your
hospitality*